

Ditre Italia Products

2022

—

Pelle ***Leathers***

DITRE
italia



VOGUE 401



VOGUE 402



VOGUE 403



VOGUE 404



VOGUE 407



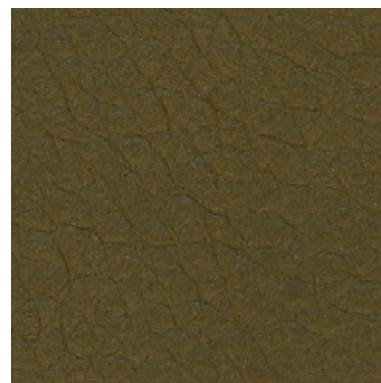
VOGUE 409



VOGUE 410



VOGUE 412



VOGUE 418



VOGUE 421

INFORMAZIONI TECNICHE / TECHNICAL INFORMATION

Tipologia / Type	pieno fiore/ full grain
Origine / origin	pelli bovine / cowhide
Provenienza / provenance	europa / european
Concia / tanning	sali di cromo / chrome salt
Tintura / dye	anilina passante in botte sottovuoto /aniline drum dyeing
Spessore / thickness	1,3/1,5 mm

TEST FISICI / PHYSICAL TESTS

solidità del colore alla luce: >2/3 scala blu	colour light fastness : >2/3 blu scale
solidità del colore allo strofinio a secco 50 cicli:	colour fastness to the 50 dry-rubbing: >3 grey scale
>3 scala grigi	colour fastness to the 20 wet-rubbing: >2/3 grey scale
solidità del colore allo strofinio a umido 20 cicli:	
>2/3 scala grigi	



VOGUE 422



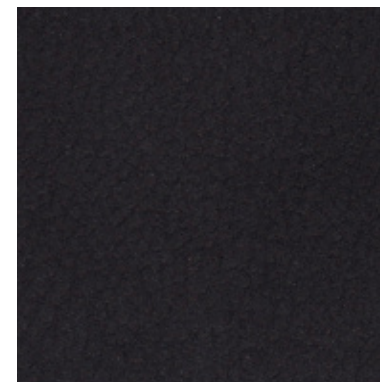
VOGUE 423



VOGUE 424



VOGUE 425



VOGUE 426

INFORMAZIONI TECNICHE / TECHNICAL INFORMATION

Tipologia / Type	pieno fiore/ full grain
Origine / origin	pelli bovine / cowhide
Provenienza / provenance	europa / european
Concia / tanning	sali di cromo / chrome salt
Tintura / dye	anilina passante in botte sottovuoto /aniline drum dyeing
Spessore / thickness	1,3/1,5 mm

TEST FISICI / PHYSICAL TESTS

solidità del colore alla luce: >2/3 scala blu	colour light fastness : >2/3 blu scale
solidità del colore allo strofinio a secco 50 cicli:	colour fastness to the 50 dry-rubbing: >3 grey scale
>3 scala grigi	colour fastness to the 20 wet-rubbing: >2/3 grey scale
solidità del colore allo strofinio a umido 20 cicli:	
>2/3 scala grigi	



VENICE 001



VENICE 002



VENICE 003



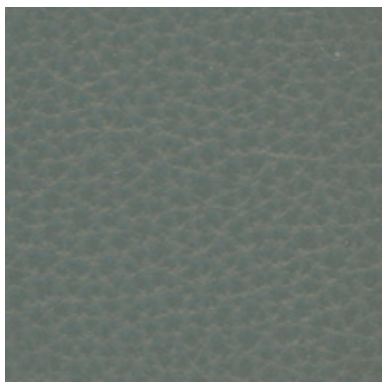
VENICE 004

INFORMAZIONI TECNICHE / TECHNICAL INFORMATION

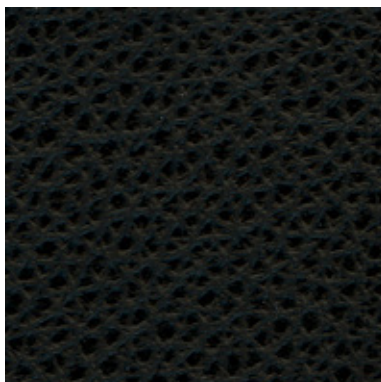
Tipologia / Type	pieno fiore/ full grain
Origine / origin	pelli bovine / cowhide
Provenienza / provenance	europea / european
Concia / tanning	sali di cromo / chrome salt
Tintura / dye	all'anilina passante in botte sotto vuoto / aniline through
Spessore / thickness	0,9/1,1 mm

TEST FISICI / PHYSICAL TESTS

solidità del colore alla luce: 4/5	colour light fastness : 4/5
solidità del colore allo strofinio a secco: 500 cicli	colour fastness to the dry-rubbing: 500 cycles
solidità del colore allo strofinio a umido: 80 cicli	colour fastness to the wet-rubbing: 80 cycles



POLAR 204



POLAR 207



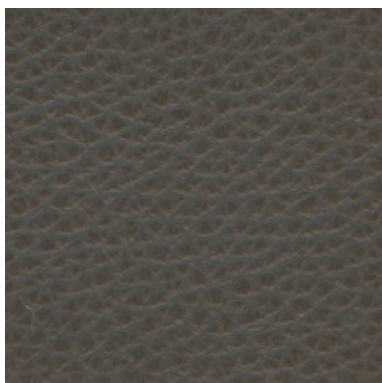
POLAR 208



POLAR 209



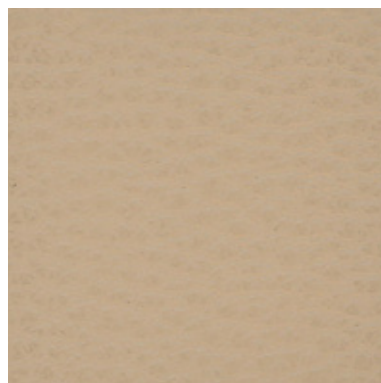
POLAR 210



POLAR 211



POLAR 212



POLAR 214



POLAR 216



POLAR 217

INFORMAZIONI TECNICHE / TECHNICAL INFORMATION

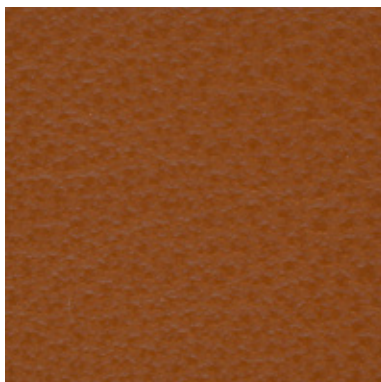
Tipologia / Type	fiore corretto/ full grain
Origine / origin	pelli bovine / cowhide
Provenienza / provenance	mondiale / worldwide
Concia / tanning	sali di cromo / chrome salt
Tintura / dye	in botte passante / in barrels
Spessore / thickness	1,2/1,4 mm

TEST FISICI / PHYSICAL TESTS

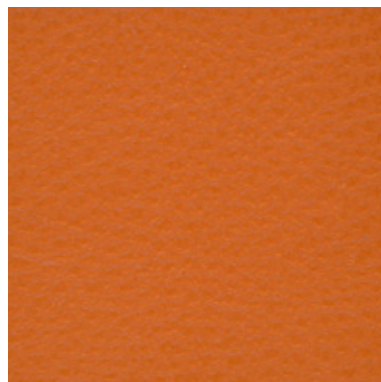
solidità del colore alla luce: 5	colour light fastness : 5
solidità del colore allo strofinio a secco 500 cicli: >4	colour fastness to the dry-rubbing 500 cycles: >4
solidità del colore allo strofinio a umido 250 cicli: >4	colour fastness to the wet-rubbing 250 cycles: >4
solidità alla flessione 50.000 cicli: nessun danno	fastness to the bending 50.000: cycles no damage



POLAR 218



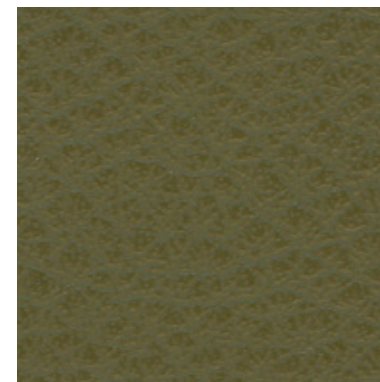
POLAR 223



POLAR 246



POLAR 251



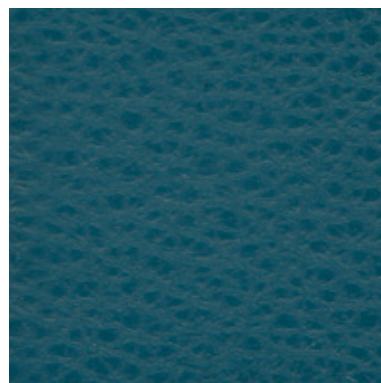
POLAR 257



POLAR 264



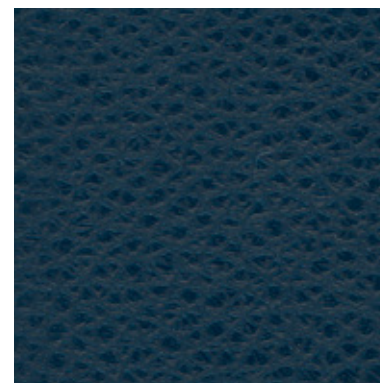
POLAR 266



POLAR 270



POLAR 271



POLAR 275

INFORMAZIONI TECNICHE / TECHNICAL INFORMATION

Tipologia / Type	fiore corretto/ full grain
Origine / origin	pelli bovine / cowhide
Provenienza / provenance	mondiale / worldwide
Concia / tanning	sali di cromo / chrome salt
Tintura / dye	in botte passante / in barrels
Spessore / thickness	1,2/1,4 mm

TEST FISICI / PHYSICAL TESTS

solidità del colore alla luce: 5	colour light fastness : 5
solidità del colore allo strofinio a secco 500 cicli: >4	colour fastness to the dry-rubbing 500 cycles: >4
solidità del colore allo strofinio a umido 250 cicli: >4	colour fastness to the wet-rubbing 250 cycles: >4
solidità alla flessione 50.000 cicli: nessun danno	fastness to the bending 50.000: cycles no damage



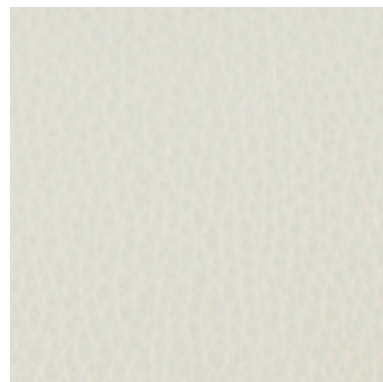
POLAR 277



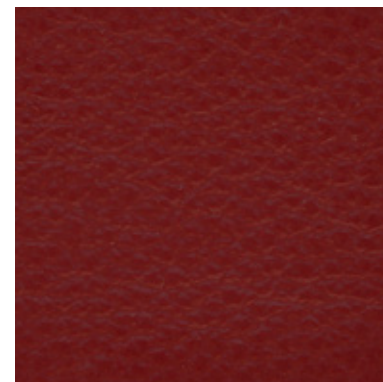
POLAR 281



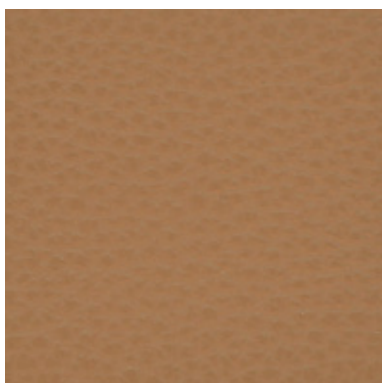
POLAR 284



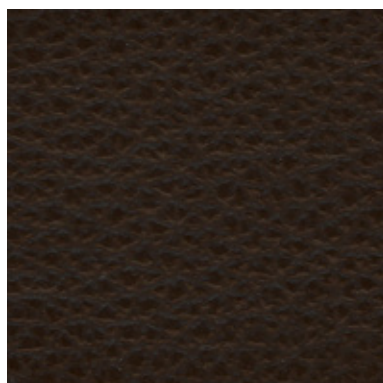
POLAR 286



POLAR 288



POLAR 295



POLAR 298



POLAR 304



POLAR 398



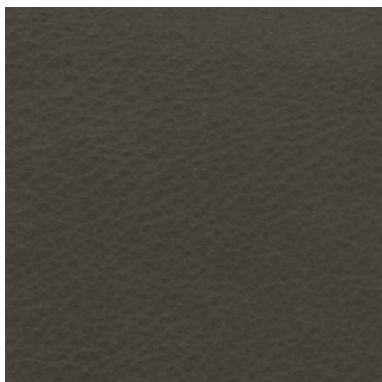
POLAR 399

INFORMAZIONI TECNICHE / TECHNICAL INFORMATION

Tipologia / Type	fiore corretto/ full grain
Origine / origin	pelli bovine / cowhide
Provenienza / provenance	mondiale / worldwide
Concia / tanning	sali di cromo / chrome salt
Tintura / dye	in botte passante / in barrels
Spessore / thickness	1,2/1,4 mm

TEST FISICI / PHYSICAL TESTS

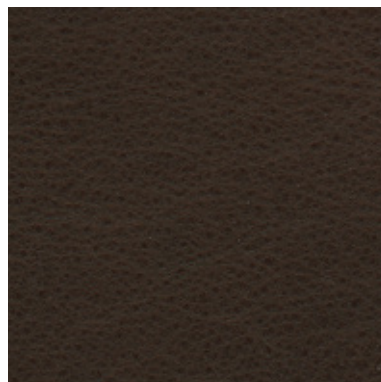
solidità del colore alla luce: 5	colour light fastness : 5
solidità del colore allo strofinio a secco 500 cicli: >4	colour fastness to the dry-rubbing 500 cycles: >4
solidità del colore allo strofinio a umido 250 cicli: >4	colour fastness to the wet-rubbing 250 cycles: >4
solidità alla flessione 50.000 cicli: nessun danno	fastness to the bending 50.000: cycles no damage



PISA 001



PISA 002



PISA 003



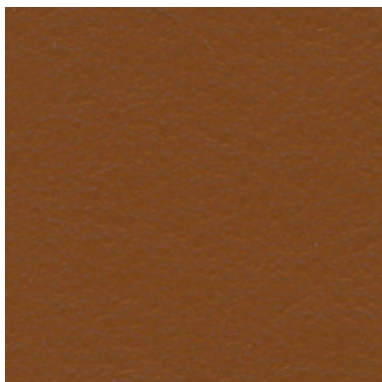
PISA 004

INFORMAZIONI TECNICHE / TECHNICAL INFORMATION

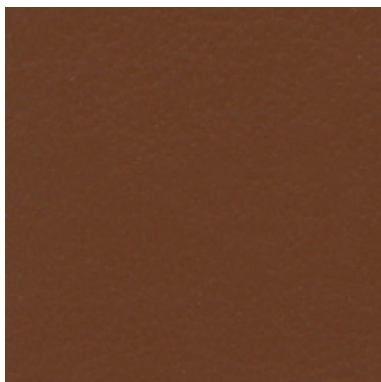
Tipologia / Type	pieno fiore / full grain
Origine / origin	pelli bovine / cowhide
Provenienza / provenance	europea / european
Concia / tanning	sali di cromo / chrome salt
Tintura / dye	in botte con anilina / in barrels
Spessore / thickness	1,0/1,2 mm

TEST FISICI / PHYSICAL TESTS

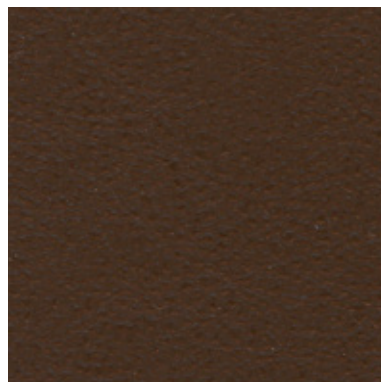
solidità del colore alla luce: 3	colour light fastness : 3
solidità del colore allo strofinio a secco: 50 cicli	colour fastness to the dry-rubbing: 50 cycles
solidità del colore allo strofinio a umido: 20 cicli	colour fastness to the wet-rubbing: 20 cycles



LISBONA 202



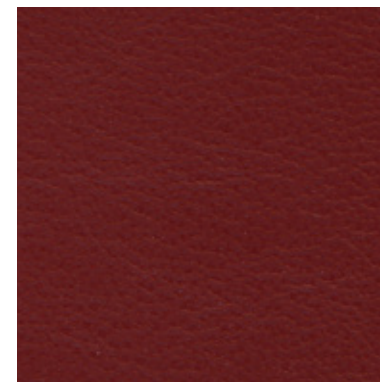
LISBONA 203



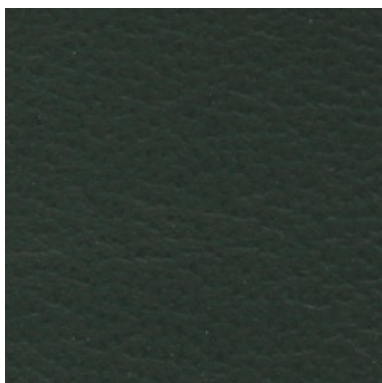
LISBONA 204



LISBONA 209



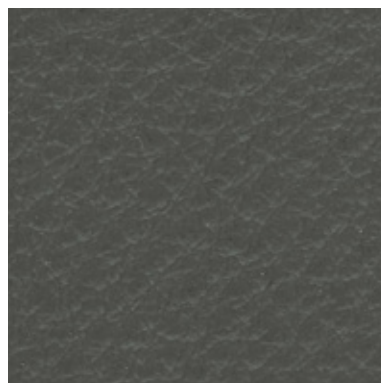
LISBONA 210



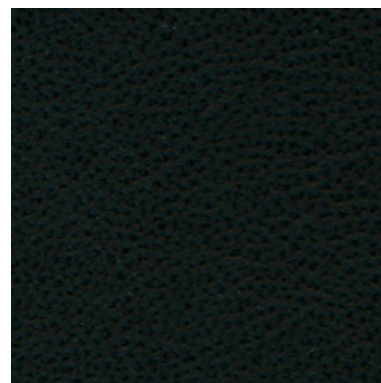
LISBONA 213



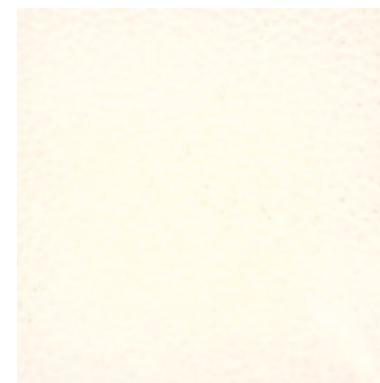
LISBONA 216



LISBONA 218



LISBONA 220



LISBONA 225

INFORMAZIONI TECNICHE / TECHNICAL INFORMATION

Tipologia / Type	fiore corretto/ full grain
Origine / origin	pelli bovine / cowhide
Provenienza / provenance	europea / european
Concia / tanning	sali di cromo / chrome salt
Tintura / dye	all'anilina / aniline dyed
Spessore / thickness	0,9/1 mm

TEST FISICI / PHYSICAL TESTS

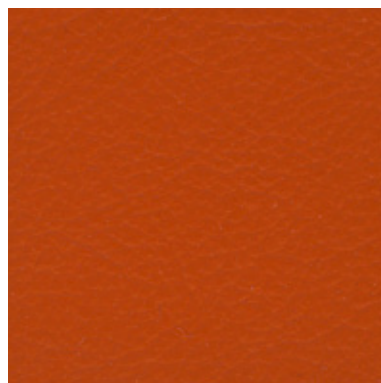
solidità del colore alla luce: > 7	colour light fastness : > 7
solidità del colore allo strofinio a secco 500 cicli: >4/5	colour fastness to the dry-rubbing 500 cycles: >4/5
solidità del colore allo strofinio a umido 250 cicli: >4/5	colour fastness to the wet-rubbing 250 cycles: >4/5
solidità alla flessione >50.000 cicli	fastness to the bending >50.000 cycles



LISBONA 229



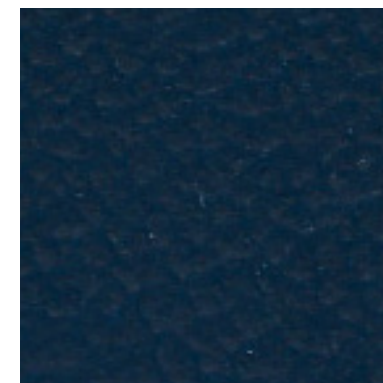
LISBONA 232



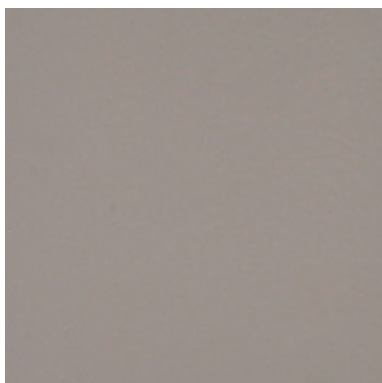
LISBONA 233



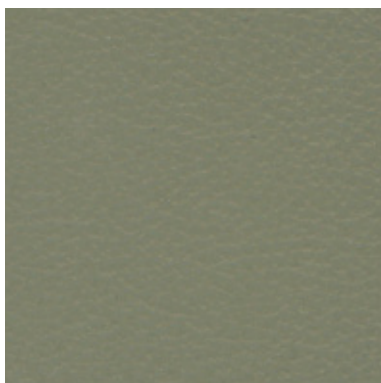
LISBONA 238



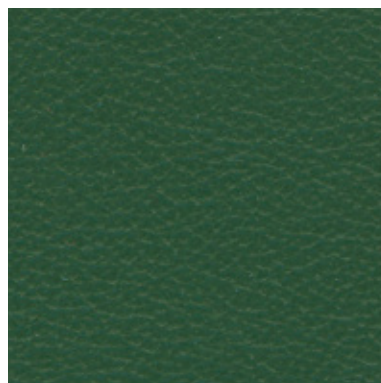
LISBONA 239



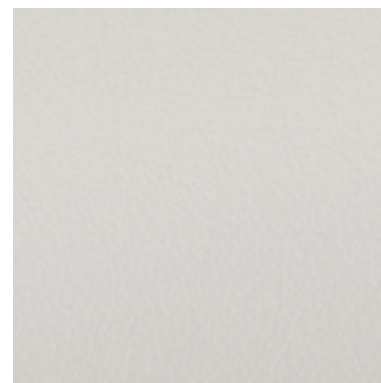
LISBONA 240



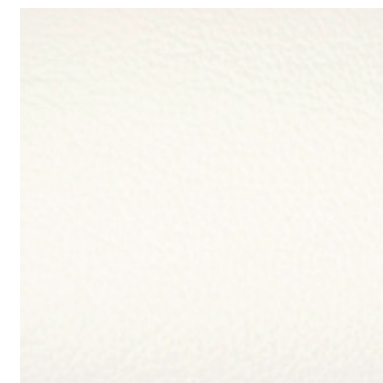
LISBONA 241



LISBONA 242



LISBONA 249



LISBONA 259

INFORMAZIONI TECNICHE / TECHNICAL INFORMATION

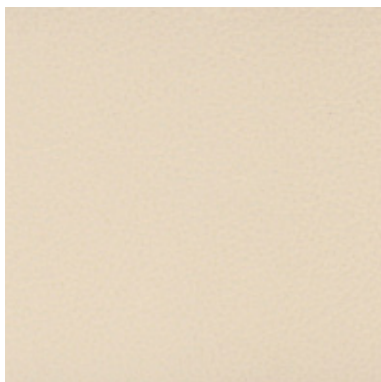
Tipologia / Type	fiore corretto/ full grain
Origine / origin	pelli bovine / cowhide
Provenienza / provenance	europea / european
Concia / tanning	sali di cromo / chrome salt
Tintura / dye	all'anilina / aniline dyed
Spessore / thickness	0,9/1 mm

TEST FISICI / PHYSICAL TESTS

solidità del colore alla luce: > 7	colour light fastness : > 7
solidità del colore allo strofinio a secco 500 cicli: >4/5	colour fastness to the dry-rubbing 500 cycles: >4/5
solidità del colore allo strofinio a umido 250 cicli: >4/5	colour fastness to the wet-rubbing 250 cycles: >4/5
solidità alla flessione >50.000 cicli	fastness to the bending >50.000 cycles



LISBONA 266



LISBONA 267



LISBONA 268



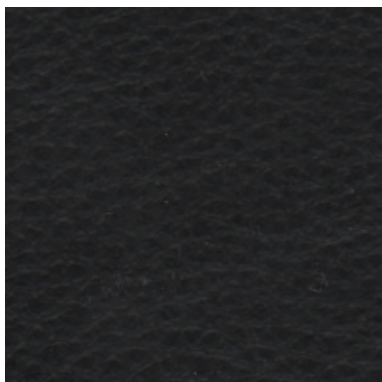
LISBONA 278

INFORMAZIONI TECNICHE / TECHNICAL INFORMATION

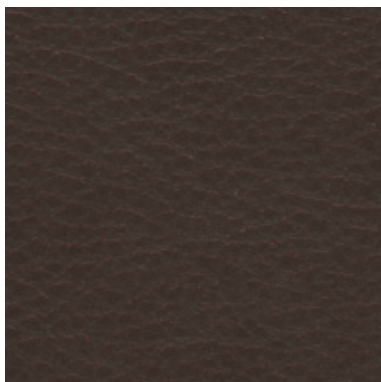
Tipologia / Type	fiore corretto/ full grain
Origine / origin	pelli bovine / cowhide
Provenienza / provenance	europea / european
Concia / tanning	sali di cromo / chrome salt
Tintura / dye	all'anilina / aniline dyed
Spessore / thickness	0,9/1 mm

TEST FISICI / PHYSICAL TESTS

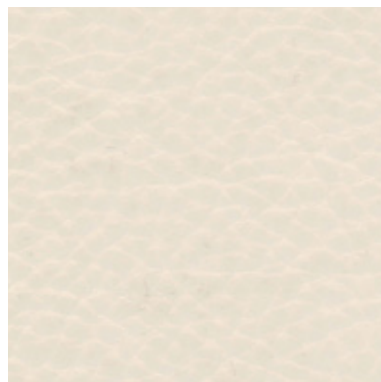
solidità del colore alla luce: > 7	colour light fastness : > 7
solidità del colore allo strofinio a secco 500 cicli: >4/5	colour fastness to the dry-rubbing 500 cycles: >4/5
solidità del colore allo strofinio a umido 250 cicli: >4/5	colour fastness to the wet-rubbing 250 cycles: >4/5
solidità alla flessione >50.000 cicli	fastness to the bending >50.000 cycles



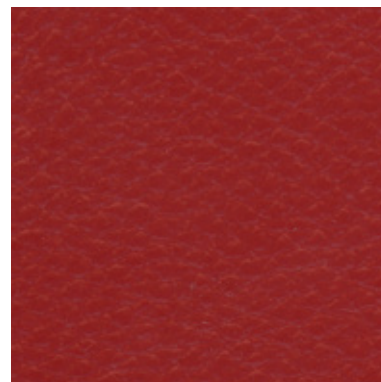
TORONTO 101



TORONTO 102



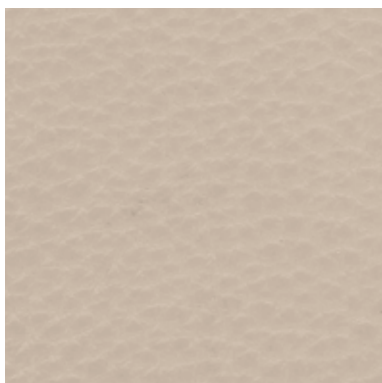
TORONTO 103



TORONTO 105



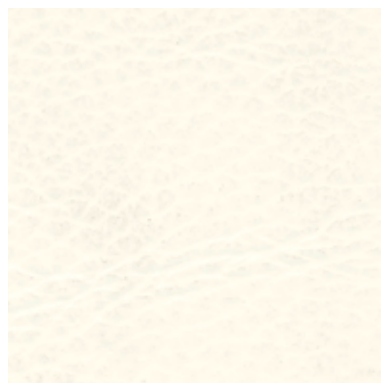
TORONTO 108



TORONTO 109



TORONTO 112



TORONTO 113



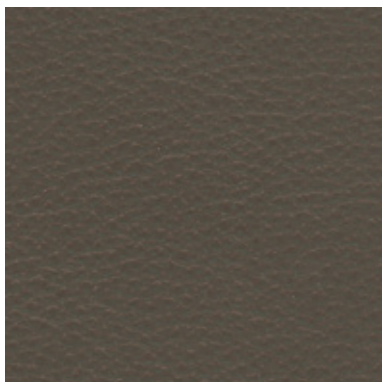
TORONTO 200

INFORMAZIONI TECNICHE / TECHNICAL INFORMATION

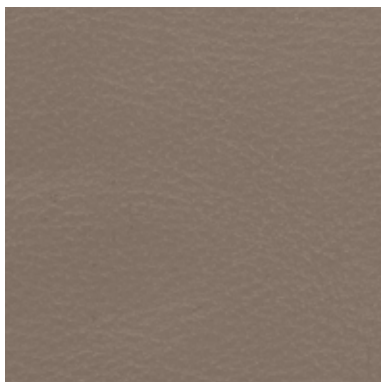
Tipologia / Type	fiore corretto/ full grain
Origine / origin	pelli bovine / cowhide
Provenienza / provenance	mondiale / worldwide
Concia / tanning	sali di cromo / chrome salt
Tintura / dye	in botte passante / in barrels
Spessore / thickness	1,3/1,5 mm

TEST FISICI / PHYSICAL TESTS

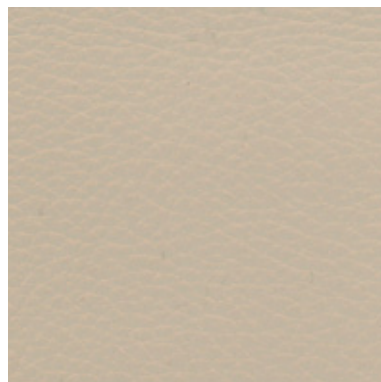
solidità del colore alla luce: 4/5 su 5	colour light fastness : 4/5 out of 5
solidità del colore allo strofinio a secco 500 cicli	colour fastness to the dry-rubbing 500 cycles
solidità del colore allo strofinio a umido 250 cicli	colour fastness to the wet-rubbing 250 cycles
solidità alla flessione 50.000 cicli	fastness to the bending 50.000 cycles



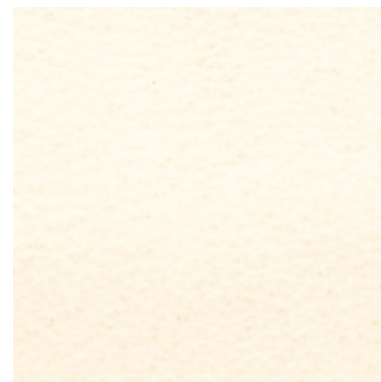
TOKIO 401



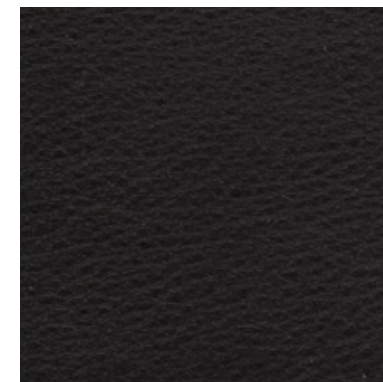
TOKIO 404



TOKIO 406



TOKIO 409



TOKIO 451



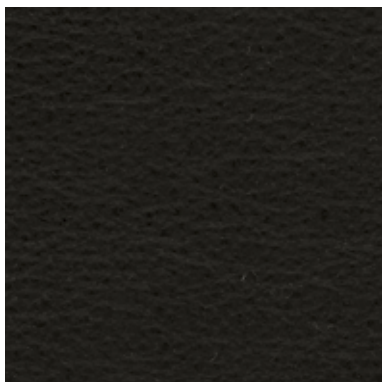
TOKIO 500

INFORMAZIONI TECNICHE / TECHNICAL INFORMATION

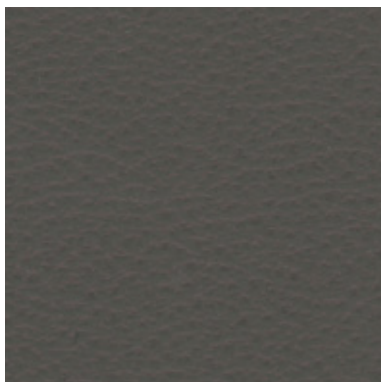
Tipologia / Type	fiore corretto / half grain
Origine / origin	pelli bovine / cowhide
Provenienza / provenance	mondiale / worldwide
Concia / tanning	sali di cromo / chrome salt
Tintura / dye	in botte passante / in barrels
Spessore / thickness	1,2/1,3 mm

TEST FISICI / PHYSICAL TESTS

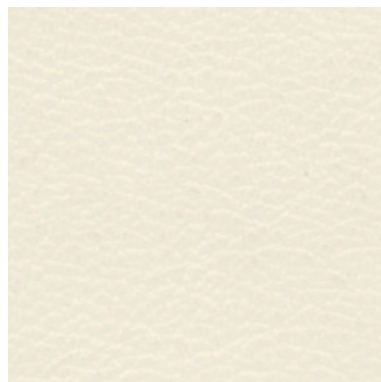
solidità del colore alla luce: 5	colour light fastness : 5
solidità del colore allo strofinio a secco: 500 cicli	colour fastness to the dry-rubbing: 500 cycles
solidità del colore allo strofinio a umido: 250 cicli	colour fastness to the wet-rubbing: 250 cycles



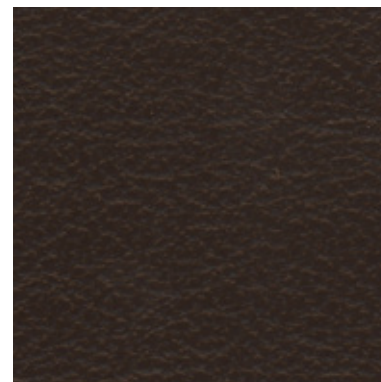
SIDNEY 80



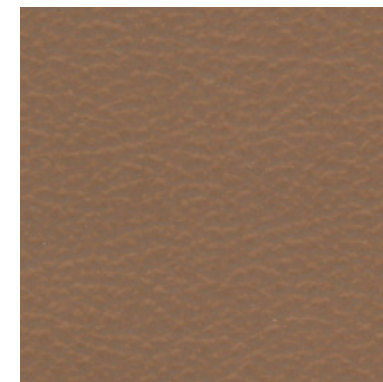
SIDNEY 201



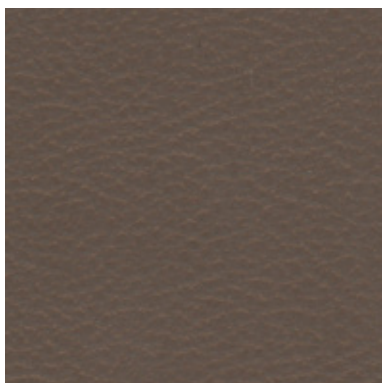
SIDNEY 415



SIDNEY 696



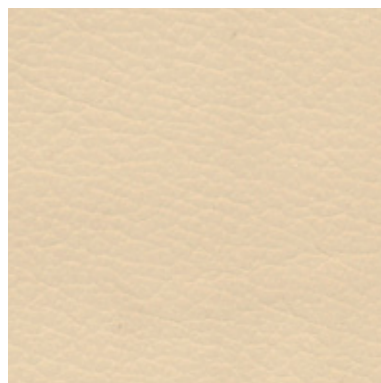
SIDNEY 700



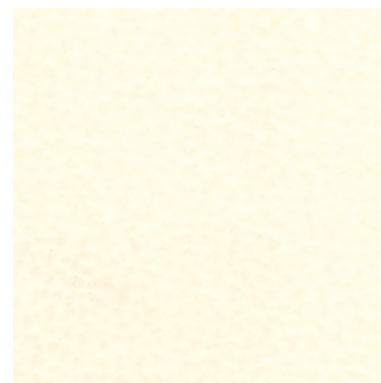
SIDNEY 701



SIDNEY 702



SIDNEY 817



SIDNEY 2000

INFORMAZIONI TECNICHE / TECHNICAL INFORMATION

Tipologia / Type	mezzo fiore/ half grain
Origine / origin	pelli bovine / cowhide
Provenienza / provenance	mondiale / worldwide
Concia / tanning	sali di cromo / chrome salt
Tintura / dye	in botte passante / in barrels
Spessore / thickness	0,9/1,1 mm

TEST FISICI / PHYSICAL TESTS

solidità del colore alla luce: 4/5 su 5	colour light fastness : 4/5 out of 5
solidità del colore allo strofinio a secco: 500 cicli	colour fastness to the dry-rubbing: 500 cycles
solidità del colore allo strofinio a umido: 250 cicli	colour fastness to the wet-rubbing: 250 cycles
solidità alla flessione: 50.000 cicli	fastness to the bending: 50.000

DITRE
ITALIA

31016 Cordignano (Treviso) Zona Industriale Via del Lavoro, 21
Tel. +39.0438.9999 Fax +39.0438.999993 www.ditreitalia.it info@ditreitalia.it